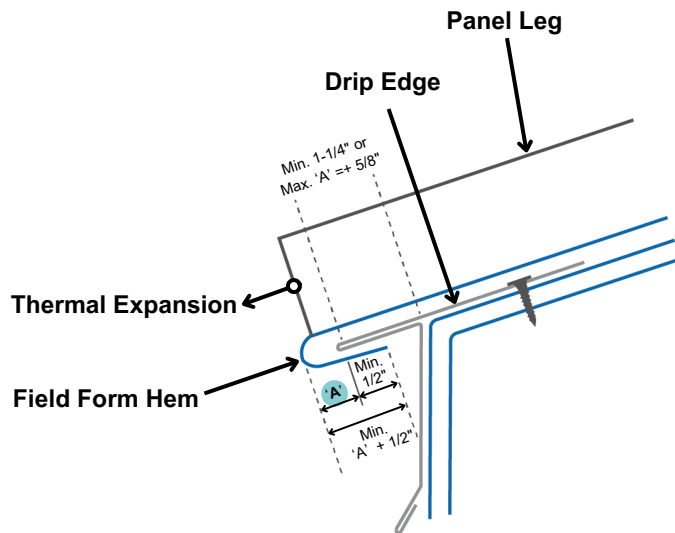




Setting Panel Thermal Gap During Installation



Refer to Table 1 for gap.

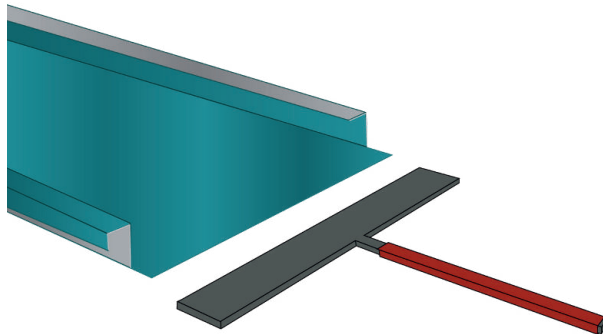
NOTE

'A' = Gap from Thermal Expansion Chart during time of installation

Panel Hemming

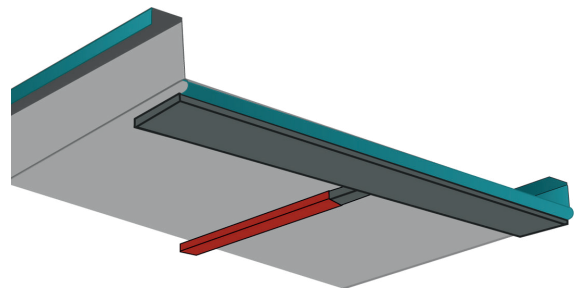
1

Notch vertical legs back from eave end of panel equal to hem length (nominally 1 inch or maximum dimension provided.)



2

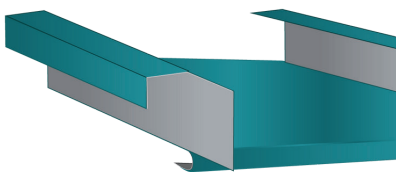
Use panel hemming tool to fold panel end 180 degrees.



Closing Female Rib End (optional)

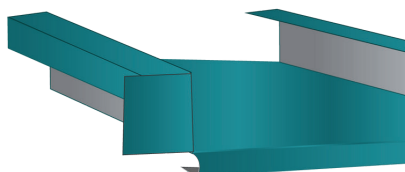
1

Leave 1" tab along inside of female leg after hemming panel and.



2

Fold tab around end of rib to close off opening.



3

Snip off excess tab along outside profile of rib.

